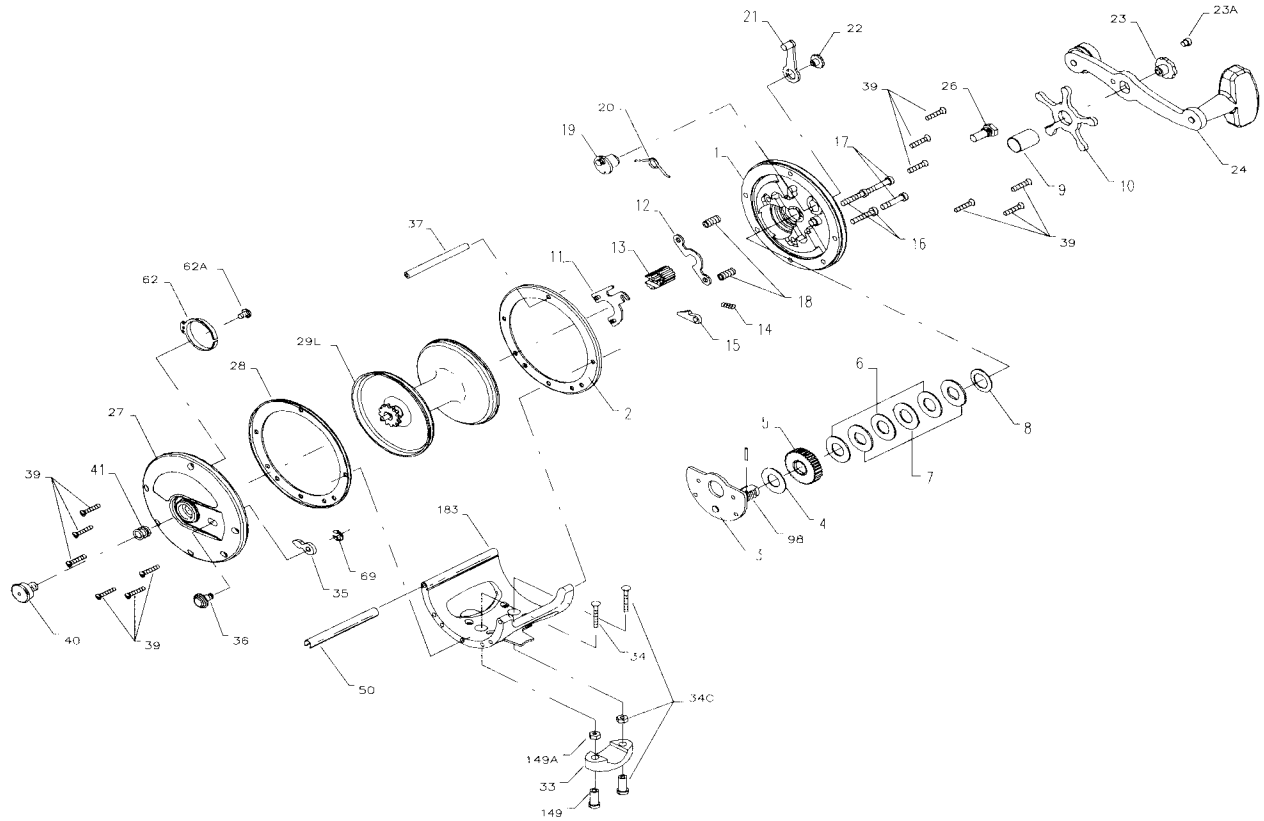




PARTS AND PRICE LIST FOR MODELS 267 AND 268



Key No.	Part No.	Description	Price	Key No.	Part No.	Description	Price
1	001 267	Right Side Plate	\$4.60	26	026 060	Right Side Bearing	\$2.05
2	002 267	Ring (2 req.)	4.00	27	027 267	Left Side Plate	6.75
3	003 066	Bridge w/Sleeve	6.50		027 268	Left Side Plate	6.75
4	004 060	Fiber Washer	.45	29L	029L113	Spool	30.00
5	005 066	Main Gear	5.00		029L268	Spool	30.00
6	006 113	Drag Washer (3 req.)	1.05	33	033 113	Rod Clamp	4.00
7	007C060	Metal Washer Set	2.50	*	*033R200	Ringed Rod Clamp (Optional)	6.25
8	008 060	Tension Spring	.50	34	034 045	Rod Clamp Screw (2 req.)	1.00
9	009 066	Spacing Sleeve	.90	34C	034C045	Rod Clamp Screw w/Nuts	2.50
10	010 066	Star Drag Wheel	3.50	35	035 060	Click Tongue	1.15
11	011 113	Eccentric Jack	1.60	36	036 267	Click Button	1.25
12	012 060	Pinion Yoke	.90	37	037 113	Frame Post	2.00
13	013 049	Pinion	3.55		037 113HLW	Frame Post	2.10
14	014 099	Dog Spring	.45	39	039 005	Side Plate Screw (12 req.)	.40
15	015 099	Dog	.90	40	040 060	Left Side Bearing	2.50
16	016 060CH	Lower Bridge Screw	.45	41	041 060	Left Side Bearing Spring	.80
17	017 060CH	Upper Bridge Screw	.45	50	050 113HL	Frame Post Cover	1.00
18	018 060	Clutch Spring	.45		050 113HW	Frame Post Cover	1.00
19	019 267	Eccentric	2.05	62	062 309	Click Spring	1.70
20	020 267	Eccentric Spring	.45	62A	062 209	Click Spring Screw	.50
21	021 066	Eccentric Lever	1.75	69	069B600	Retaining Ring	.90
22	022 060CH	Eccentric Screw	.55	98	098 060	Gear Sleeve	4.00
23	023 060	Handle Screw	1.75	149	149 045	Rod Clamp Nut (2 req.)	1.00
23A	110 060	Handle Lock Screw	.45	149A	149 200	Rod Clamp Hex Nut (2 req.)	.50
24	024 066	Handle	7.60	183	183 267	Frame	32.00
					183 268	Frame	34.00

*Not Shown